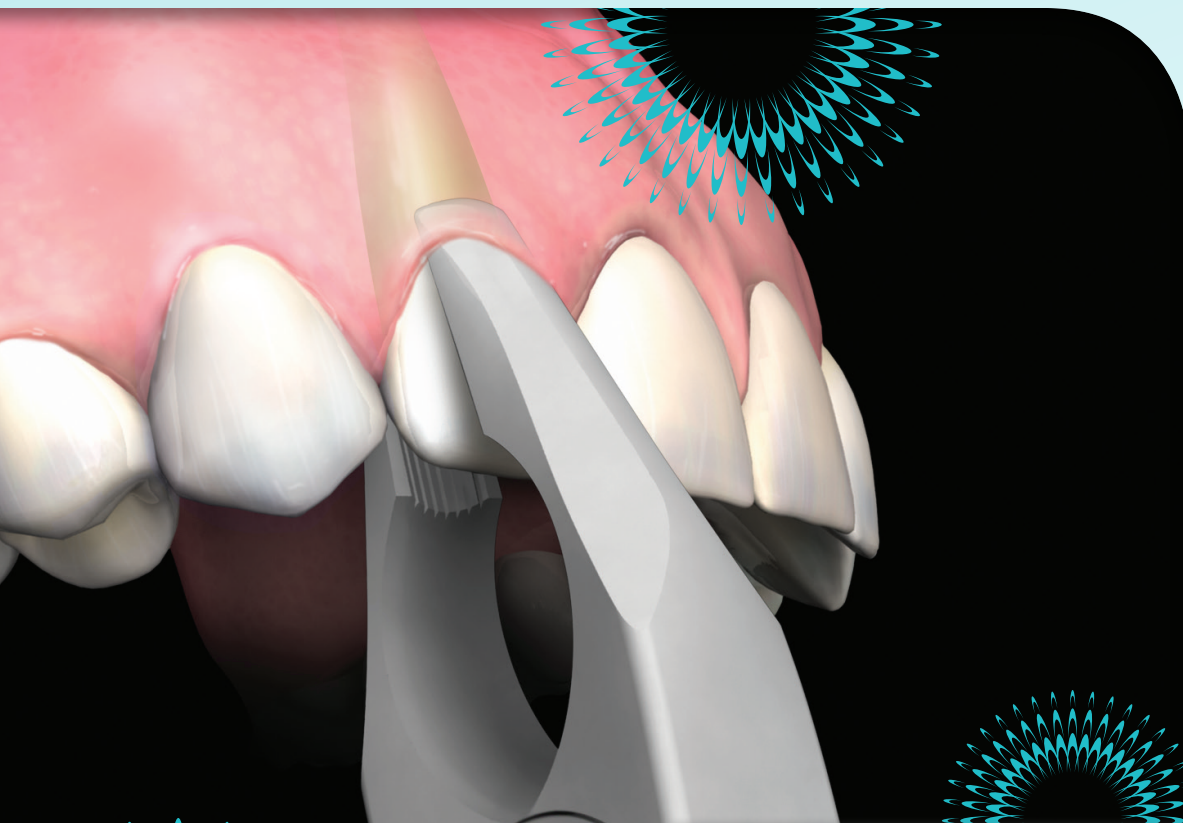
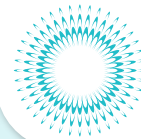


SURGICAL



FAF1XS

*Hu-Friedy*

## EXTRACTION SOLUTIONS

PRECISION INSTRUMENTS DESIGNED  
TO PROVIDE TOTAL SOLUTIONS FOR  
YOUR EXTRACTION PROCEDURES.

How the best perform



# HOEXTER MESIAL DISTAL LUXATING ELEVATORS

The Hoexter Mesial/Distal Luxating Elevators are designed to protect the osseous ridge by luxating roots in the mesio-distal plane.

- Mesio-distal access with improved working end angulation
- Handcrafted with thin, sharp blades to easily penetrate the interproximal space
- Manufactured with Immunity Steel for enhanced longevity and corrosion resistance
- Available in 3mm and 5mm mesial, distal, right and left designs

## DESIGN RATIONALE BY DR. DAVID HOEXTER:

“ Throughout history dentists have been taught to extract teeth in the easiest direction – towards the thinnest, supportive buccal bone. However, this technique leads to ischemic or traumatic bone loss of buccal bone resulting in cavernous buccal depressions that will not adequately support an implant.



Based on my experience, if a mesial/distal approach is used, the buccal and lingual bone is preserved and bone regeneration occurs. This enables successful implant positioning and predictable osseointegration. This is why the Hoexter Mesial/Distal Luxating Elevators are designed to protect the osseous ridge in tooth extractions by luxating roots in the mesio-distal plane. ”

- DR. DAVID HOEXTER



Mesial,  
Left,  
3 mm

| EMLL3

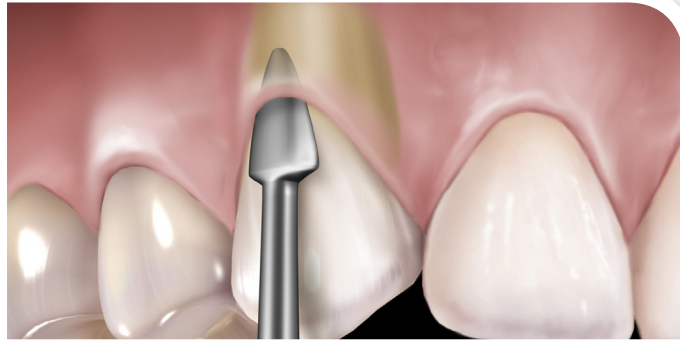
Distal,  
Right,  
3 mm

| EDLR3

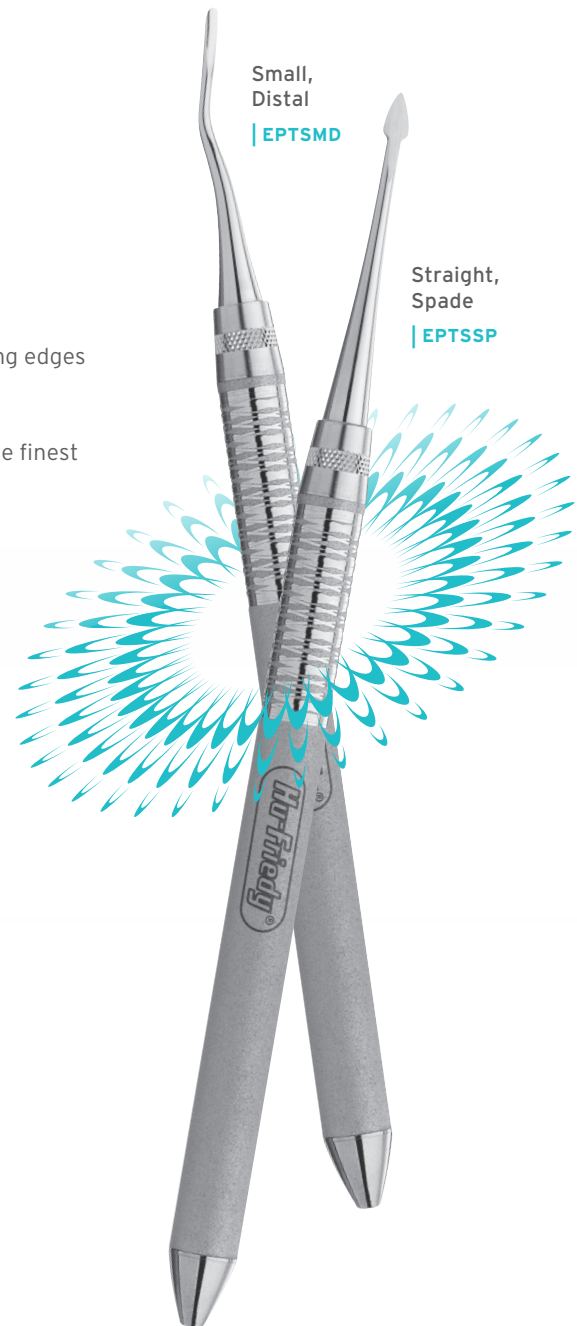
# LUXATING HYBRIDS

Luxating Hybrids are designed with thin, precisely angled tips to aid clinicians in preserving the buccal plate during atraumatic extractions.

- Improved apical and interproximal access with thin working tips
- Easily severs the periodontal ligament with finely honed, sharp cutting edges
- Enhanced oral adaptation with 7 precisely manufactured tip options
- Longevity and corrosion resistance afforded by handcrafting from the finest grade surgical stainless steel



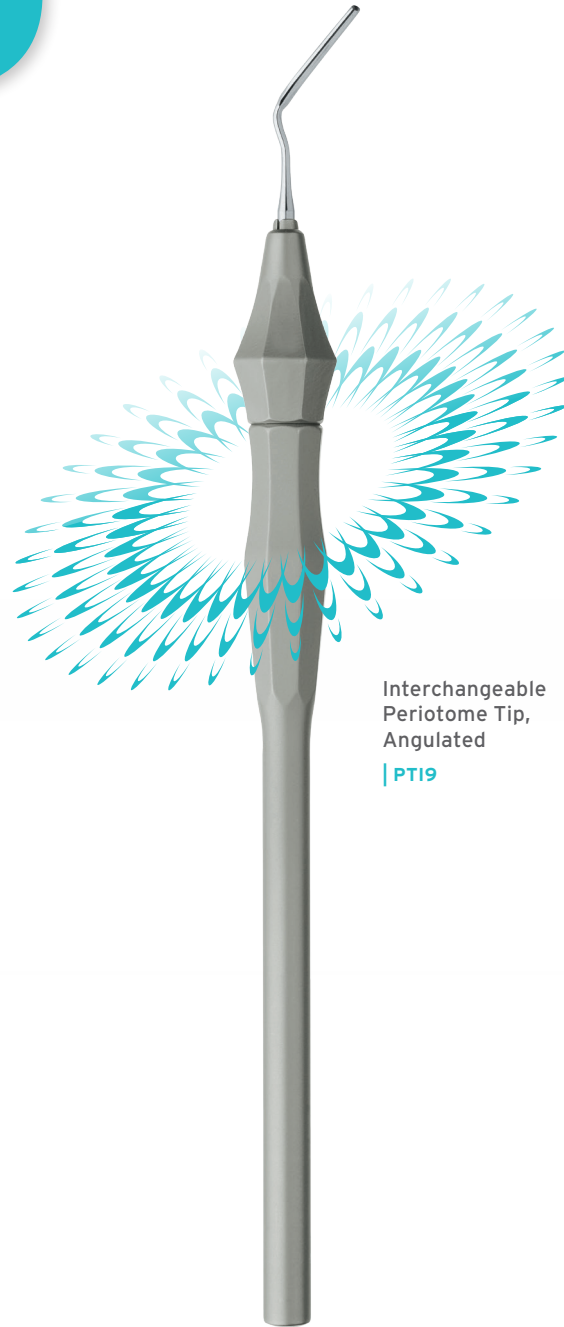
*Straight spade Luxating Hybrid severing the periodontal ligament.*



# INTERCHANGEABLE PERIOTOME

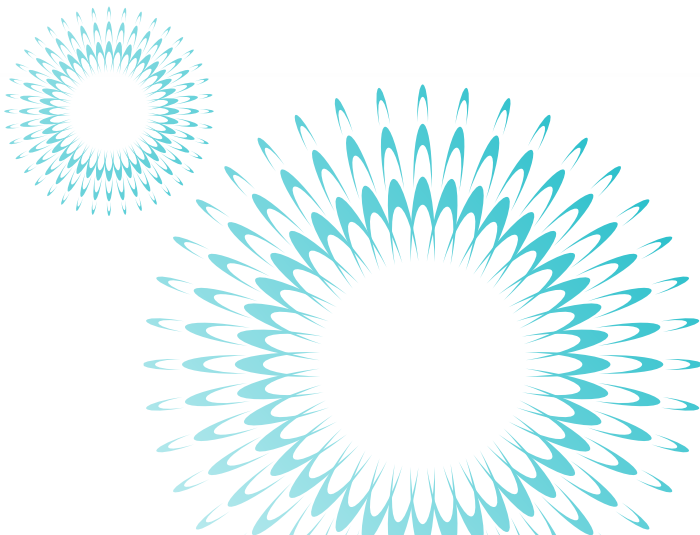
Hu-Friedy's Interchangeable Periotome features four thin, sharp interchangeable blades for severing the periodontal ligament. The blades are securely positioned in the handle and removable for easy cleaning, care and replacement.

- Thin, sharp blades available in four designs to easily sever the periodontal ligament
- Large diameter handle for enhanced ergonomics, tactile feel and optimal clinical performance
- Longevity and corrosion resistance afforded by hand-crafting from the finest grade surgical stainless steel



Interchangeable  
Periotome Tip,  
Angulated

| PT19



# PERIOTOMES

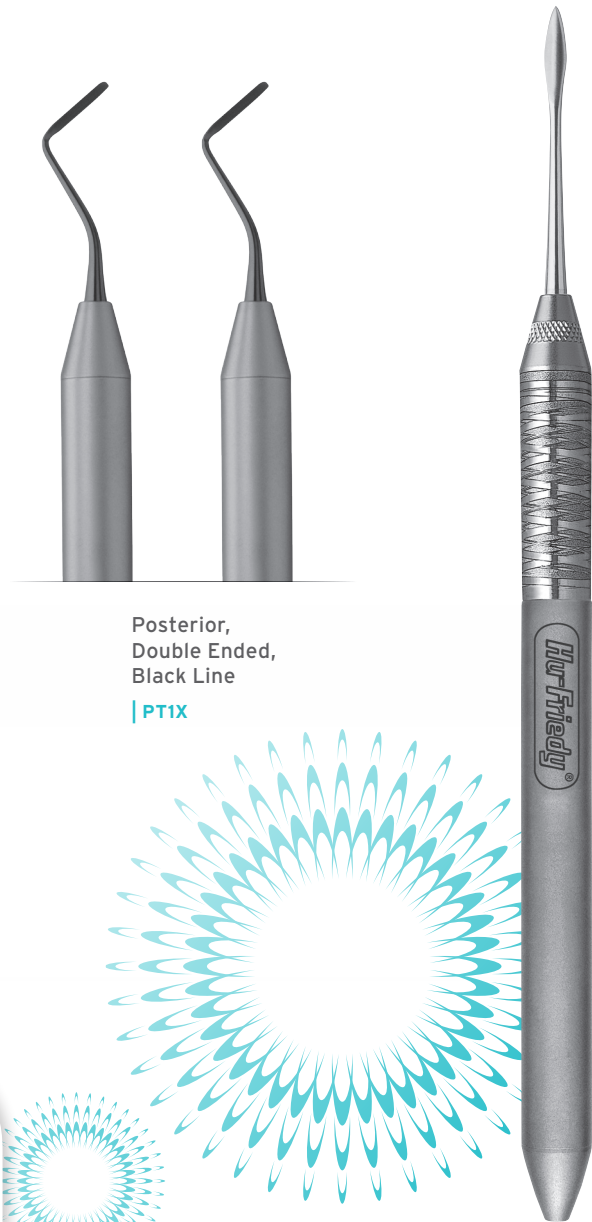
Hu-Friedy periotomes are designed to facilitate the removal of teeth with minimal damage to the surrounding alveolar bone.

- Thin, clinically designed blades to sever attachments easily
- Unique, smooth, large diameter lightweight handle for maximum comfort and increased control\*
- Available in both Single-Ended and Double-Ended, Posterior and Anterior Applications, Satin Steel® or Black Line designs

\* Gerwatowski, L.J., McFall, D.B., Stach, D.: Carpal Tunnel Syndrome; Risk Factors and Preventive Strategies for the Dental Hygienist. *Journal of Dental Hygiene*, February 1992.

## Additional Black Line Design Features:

- Performance engineered coating for a harder, smoother surface for optimal edge retention and enhanced lubricity
- Reduced light reflection afforded by a matte finished handle and black working ends



Posterior,  
Double Ended,  
Black Line

| PT1X

Anterior,  
Straight,  
Single Ended

| PT6

# ATRAUMAIR FORCEPS

Hu-Friedy's new line of Atraumair Forceps are designed for optimal access and enhanced crown and root engagement.

Each forcep is meticulously crafted to the highest quality standard, ensuring superior performance and longevity. Atraumair Forceps are available in 13 unique patterns that provide a complete line for a variety of extraction cases.

- Enhanced beak geometries for optimal access and engagement
- Laser marked hinge for greater visibility when bagged for sterilization
- Matte finish for enhanced contrast and reduced light reflection
- Unique hole design reduces weight of the forceps, providing increased comfort and control
- Meticulously crafted from the finest surgical grade stainless steel



1 Apical Forceps  
Upper Incisors  
| FAFIXS

# APICAL FORCEPS

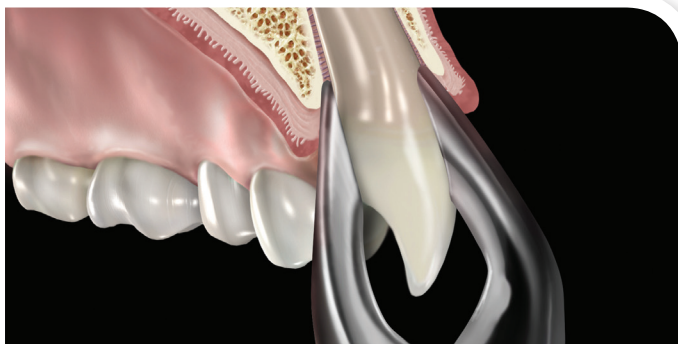
The precise, anatomical design of Hu-Friedy's Apical Forceps feature thin beaks for penetrating surrounding bone and firmly grasping roots to aid in atraumatic extractions.

- Firm, secure grasp of the crown and root with thin, sharp, tapered beaks that penetrate the PDL space and allow for apical progression
- Enhanced beak geometries and longitudinal beak serrations provide a firm, secure grasp of the crown and root reducing the risk of crushing or fracturing the tooth
- Longevity and corrosion resistance afforded by hand-crafting from the finest grade surgical stainless steel
- Reliable performance guaranteed through uncompromising quality



Upper Universal,  
Apical Forceps

| FAF150



*An upper universal apical forceps extracting a maxillary canine.*

## ERGO DYNAMIC™ ELEVATORS

One handle size does not fit all individuals. Ergo Dynamic elevators were designed to offer an alternative handle option to better fit within the palm of your hand.

- Ergo Dynamic Elevators increase comfort and ease of use for clinicians who prefer small handle elevators
- Provide better leverage for increased performance during procedures
- Handcrafted from Immunity Steel and heat treated to provide optimal sharpness and durability

## LUXATING ELEVATORS

Luxating elevators reduce pressure on adjacent teeth as they are used in a rocking motion for cutting as opposed to a standard elevator that lifts and pries.

- Designed with sharp, thin blades for cutting periodontal ligaments
- Provide better leverage for increased performance during procedures
- Handcrafted from Immunity Steel® and heat treated to provide optimal sharpness and durability
- Available in standard, Ergo Dynamic, or Black Line designs

### Additional Black Line Design Features:

- Performance engineered coating for a harder, smoother surface providing optimal edge retention
- Reduced light reflection afforded by a matte finished handle and black working ends
- Distinct black finish for enriched contrast and visual acuity at the surgical site



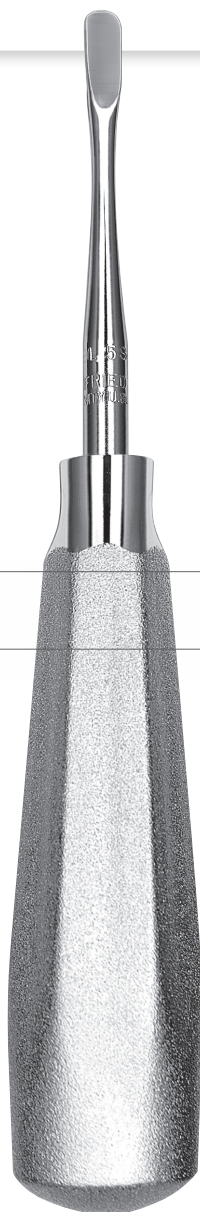
# ACTUAL SIZE COMPARISON

Ergo Dynamic Small Elevator, Standard Elevator and Black Line

\*Black Line handle option only available in Luxating Elevators.



Straight, 5 mm  
| EL5SSM  
Ergo Dynamic Handle



Straight, 5 mm  
| EL5S  
Standard Handle



Straight, 5 mm  
| EL5SX\*  
Black Line Handle

# ORDERING INFORMATION

## HOEXTER MESIAL DISTAL LUXATING ELEVATORS

Luxating Elevator, 3mm, Distal Left	EDLL3
Luxating Elevator, 3mm, Mesial Left	EMLL3
Luxating Elevator, 3mm, Distal Right	EDLR3
Luxating Elevator, 3mm, Mesial Right	EMLR3
Luxating Elevator, 5mm, Distal Left	EDLL5
Luxating Elevator, 5mm, Mesial Left	EMLL5
Luxating Elevator, 5mm, Distal Right	EDLR5
Luxating Elevator, 5mm, Mesial Right	EMLR5

## LUXATING HYBRIDS

Luxating Hybrid, Large Distal	EPTLGD
Luxating Hybrid, Large Mesial	EPTLGM
Luxating Hybrid, Small Curved	EPTSMC
Luxating Hybrid, Small Distal	EPTSM D
Luxating Hybrid, Small Mesial	EPTSM M
Luxating Hybrid, Small Straight	EPTSM S
Luxating Hybrid, Straight Spade	EPTSSP
Luxating Hybrid Kit	EPTKIT

## PERIOTOMES

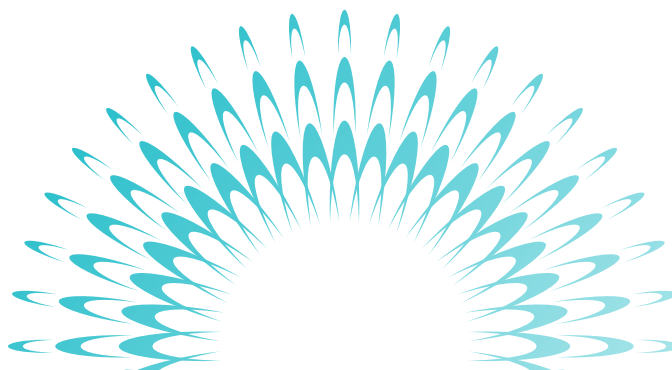
Periotome, Posterior, Double Ended	PT1
Periotome, Posterior, Double Ended, Black Line	PT1X
Periotome, Anterior, Double-Ended	PT2
Periotome, Anterior, Double-Ended, Black Line	PT2X
Periotome, Posterior, Right, Single-Ended	PT3
Periotome, Posterior, Right, Single-Ended, Black Line	PT3X
Periotome, Posterior, Left, Single-Ended	PT4
Periotome, Posterior, Left, Single-Ended, Black Line	PT4X
Periotome, Anterior, Angled, Single-Ended	PT5
Periotome, Anterior, Angled, Single-Ended, Black Line	PT5X
Periotome, Anterior, Straight, Single-Ended	PT6
Periotome, Anterior, Straight, Single-Ended, Black Line	PT6X

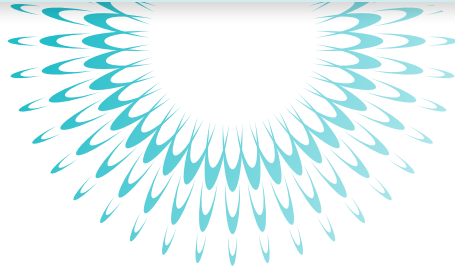
## INTERCHANGEABLE PERIOTOMES

Interchangeable Periotome Handle	PTIH
Interchangeable Periotome Tip, Straight Wide	PTI7
Interchangeable Periotome Tip, Straight Narrow	PTI8
Interchangeable Periotome Tip, Angulated	PTI9
Interchangeable Periotome Tip, Mesial/Distal Angulated	PTI10
Interchangeable Periotome Kit	PTIKIT

## ERGO DYNAMIC™ ELEVATORS

#301 Apexo Elevator, Ergo Dynamic Handle	E301SM
#77R Elevator (Serrated), Ergo Dynamic Handle	E77RSM
#B Cogswell Elevator, Ergo Dynamic Handle	EBSM
#34S Seldin Elevator, Straight, Ergo Dynamic Handle	E34SSM
Luxating Elevator, 2mm, Straight, Ergo Dynamic Handle	EL2SSM
Luxating Elevator, 2mm, Curved, Ergo Dynamic Handle	EL2CSM
Luxating Elevator, 3mm, Straight, Ergo Dynamic Handle	EL3SSM
Luxating Elevator, 3mm, Curved, Ergo Dynamic Handle	EL3CSM
Luxating Elevator, 4mm, Straight, Ergo Dynamic Handle	EL4SSM
Luxating Elevator, 4mm, Curved, Ergo Dynamic Handle	EL4CSM
Luxating Elevator, 5mm, Straight, Ergo Dynamic Handle	EL5SSM
Luxating Elevator, 5mm, Curved, Ergo Dynamic Handle	EL5CSM





### LUXATING ELEVATORS

Luxating Elevator, 2mm, Straight	EL2S
Luxating Elevator, 2mm, Straight, Black Line	EL2SX
Luxating Elevator, 2mm, Curved	EL2C
Luxating Elevator, 2mm, Curved, Black Line	EL2CX
Luxating Elevator, 3mm, Straight	EL3S
Luxating Elevator, 3mm, Straight, Black Line	EL3SX
Luxating Elevator, 3mm Curved	EL3C
Luxating Elevator, 3mm Curved, Black Line	EL3CX
Luxating Elevator, 4mm, Straight	EL4S
Luxating Elevator, 4mm, Straight, Black Line	EL4SX
Luxating Elevator, 4mm, Curved	EL4C
Luxating Elevator, 4mm, Curved, Black Line	EL4CX
Luxating Elevator, 5mm, Straight	EL5S
Luxating Elevator, 5mm, Straight, Black Line	EL5SX
Luxating Elevator, 5mm, Curved	EL5C
Luxating Elevator, 5mm, Curved, Black Line	EL5CX

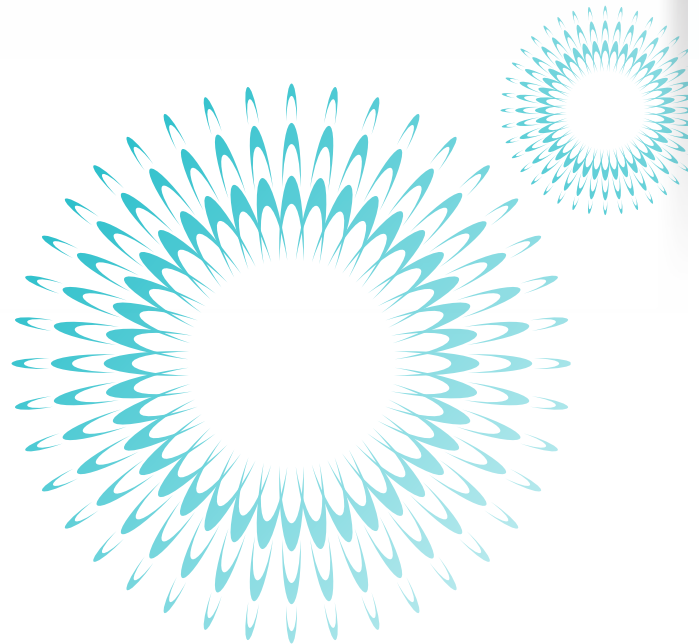
### ATRAUMAIR FORCEPS

36 Forceps, Lower Incisors and Canines	F36XS
35 Forceps, Upper Premolars	F35XS
13 Forceps, Lower Premolars	F13XS
1 Standard Forceps, Upper Incisors	F1XS
23 Cowhorn Forceps, Lower Molars	F23XS
67 Forceps, Upper Molars	F67XS
79 Forceps, Lower Molars	FX79XS
73 Forceps, Lower Molars	FX73XS
51 Root Forceps, Serrated, Upper Roots	FX51XS
45 Root Forceps, Serrated, Lower Roots	FX45XS
35 Apical Forceps, Upper Premolars	FAF35XS
36 Apical Forceps, Lower Premolars, Canines and Incisors	FAF36XS
1 Apical Forceps, Upper Incisors	FAF1XS

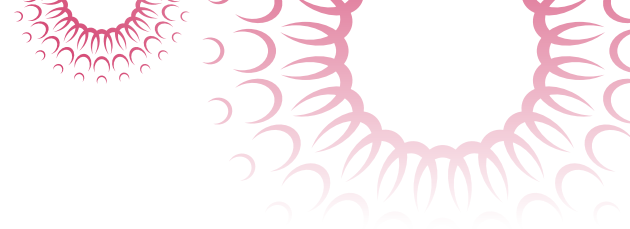


### APICAL FORCEPS - PRESIDENTIAL SERIES

Upper Anterior	FAF1
Upper Universal	FAF150
Lower Universal	FAF151
Lower Molar	FAF222
Upper Molar, European Style	FAFX67A
Lower Anterior, European Style	FAFX74N



# SUGGESTED KIT LISTS



## ATRAUMATIC EXTRACTION KIT

#5 European Style Round Scalpel Handle	<b>10-130-05E</b>
Urban Cheek Retractor	<b>CRURBAN</b>
Luxating Elevator 3mm, Curved, Black Line	<b>EL3CX</b>
Luxating Elevator 3mm, Straight, Black Line	<b>EL3SX</b>
1 Apical Forceps, Upper Incisors, Atraumair	<b>FAF1XS</b>
35 Apical Forceps, Upper Canines and Premolars, Atraumair	<b>FAF35XS</b>
36 Apical Forceps, Lower Premolars and Incisors, Atraumair	<b>FAF36XS</b>
16-Instrument Signature Series® Cassette w/ Accessory Area, Red	<b>IM4160</b>
Cone Socket Mirror Handle	<b>MH6</b>
#5 HD CS Mirror SS	<b>MIR5HD</b>
Castroviejo with Round Handle, Perma Sharp®	<b>NH5024R</b>
9 Molt Periosteal Elevator, Black Line	<b>P9X</b>
152 Kramer-Nevins Periosteal, Black Line	<b>PKN152X</b>
Periotome, Posterior, Black Line	<b>PT1X</b>
Periotome, Anterior, Black Line	<b>PT2X</b>
Goldman-Fox Curved Super-Cut Scissors, Black Line	<b>S16SCX</b>
Adson-Brown Tissue Pliers, Perma Sharp®	<b>TP5043</b>

## MINIMALLY INVASIVE EXTRACTION KIT

Luxating Elevator, 3mm, Straight, Black Line	<b>EL3SX</b>
Luxating Elevator, 5mm, Straight, Black Line	<b>EL5SX</b>
Luxating Elevator, 3mm, Curved, Black Line	<b>EL3CX</b>
Luxating Elevator, 5mm, Curved, Black Line	<b>EL5CX</b>
1 Posterior Periotome, Black Line	<b>PT1X</b>
2 Anterior Periotome, Black Line	<b>PT2X</b>
1 Apical Forceps, Upper Incisors, Atraumair	<b>FAF1XS</b>
35 Apical Forceps, Upper Canines and Premolars, Atraumair	<b>FAF35XS</b>
79 Forceps, Lower Molars, Atraumair	<b>FX79XS</b>
67 Forceps, Upper Molars, Atraumair	<b>FX67XS</b>
36 Apical Forceps, Lower Premolars and Incisors, Atraumair	<b>FAF36XS</b>
Signature Series 16-Instrument Cassette, Blue	<b>IM4168E40R</b>

For more information about  
Hu-Friedy's Total Solutions visit

**HU-FRIEDY.COM**

PERIODONTAL



RESTORATIVE



ORTHODONTIC



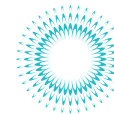
INSTRUMENT  
MANAGEMENT



ENDODONTIC



SURGICAL



ULTRASONIC  
SCALING



Hu-Friedy Mfg. Co., LLC: 3232 N. Rockwell St. | Chicago, IL 60618 | USA  
Telephone: 1-800-Hu-Friedy (1-773-975-6100) | Website: Hu-Friedy.com

©2014 Hu-Friedy Mfg. Co., LLC. All rights reserved. HF-252/1214

**Hu-Friedy**