

HuFriedyGroup Key Opinion Leader

Dr. Shayan Barootchi & Dr. Lorenzo Tavelli

Tunneled Coronally Advanced Flap Kit



DR. SHAYAN BAROOTCHI



Focus on: **Periodontal and Peri-implant Regenerative Surgery**



Country: **USA**



Favorite Instrument: **NHDPV**



University: **Harvard School of Dental Medicine**

DR. LORENZO TAVELLI



Focus on: **Periodontal and Peri-implant Soft Tissue Reconstruction**



Country: **USA**



Favorite Instrument: **NHDPV**



University: **Harvard School of Dental Medicine**

TUNNELED CORONALLY ADVANCED FLAP KIT

TCAF

A unique kit specifically designed for soft tissue grafting via the Coronally Advanced Flap (CAF), the Tunnel approach (TUN), and their combination (TCAF).

Grafting With Science



It is all about the delicate art of soft tissue management.

Dr. Shayan Barootchi



It is just a detail, but it makes all the difference.

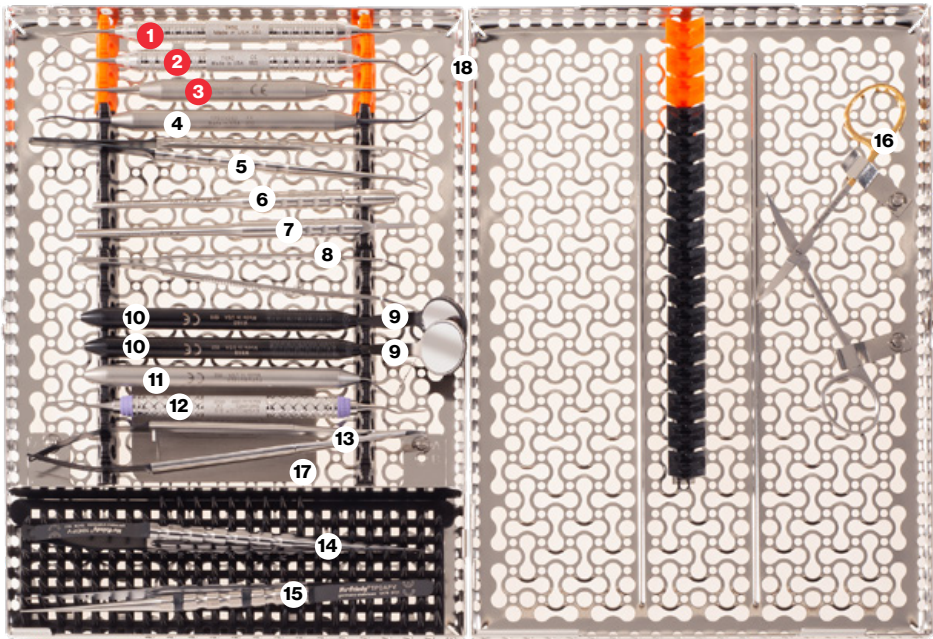
Dr. Lorenzo Tavelli



TUNNELED CORONALLY ADVANCED FLAP KIT

TCAFKIT

Tunneled Coronally Advanced Flap Kit



Case 1:

Treatment of maxillary anterior gingival recessions with the Tunneled Coronally Advanced Flap (TCAF) and an allogenic dermal matrix.

See more details about this case at [HuFriedyGroup.com/TCAF](https://www.hufriedy.com/TCAF)



TUNNELING KNIVES

1



TKN1

Tunneling Knife 1

For incisions that remove or recontour soft tissue. Also useful to excise interproximal tissue. Featuring a tunneling knife.

2



TKN2

Tunneling Knife 2

For incisions that remove or recontour soft tissue. Also useful to excise interproximal tissue. Featuring a tunneling knife.

3



PMNANOSS

Pink Matters® Tunneling Knife

Designed to help in the creation of a partial or full thickness envelope flap during connective tissue grafting procedures in perio-plastic surgery and implant surgery.

FLAP MANAGEMENT & SUTURING INSTRUMENTS

4



PPBUH2MX

Modified Buser/Hourigan Periosteal, Large, Black Line

Our innovative Black Line Periosteal is designed with a matte handle and performance engineered coating to optimize performance and precision.

5



SP20SLEM

Micro Corn Suture Pliers, Diamond Dusted

18cm. Ideal for use with guided tissue regeneration procedures.

6



SHDPV

Microsurgical Scalpel Handle, Stainless Steel

Mini Blade Scalpel handle used for cutting gingival tissue and making surgical incisions.

7



10-130-05E

5 European Scalpel Handle

This Round Scalpel Blade Handle is used for cutting gingival tissue and making surgical incisions.

8



DPU17

17 Dressing Pliers (Utility Pick-Up)

Made with stainless steel & feature a serrated tip for a positive grip & locking mechanism.

9



MIR5HDB

5 Single-Sided HD Black Line Mirror, Cone Socket

Offers superior visibility throughout any dental procedure. The Diamond Like Carbon (DLC) coating of the handle and mirror frame reduces glare up to 80%.

10



MH6B

Cone Socket Black Line Mirror Handle, Satin Steel™ Alloy

Offers superior visibility throughout any dental procedure. The Diamond Like Carbon (DLC) coating of the handle and mirror frame reduces glare up to 80%.

11



PCPUNC15CH

Qulix UNC Probe, 1-15, SE

Single-Ended, Color-Coded Probe. Ergonomic handle. University of North Carolina.

12



SAS1/29E2

Gracey 1/2 Mini Five™ Gracey Curette, #9 Handle

Longer terminal shank, standard diameter. Double-ended handle.

13



SPSPV

Microscurgical Scissor Steel, Swiss Perio

Microscurgical Castroviejo Scissors with sharp, slightly curved working ends made for fine resections of soft tissues and trimming wound margins or mucosal grafts.

14



NHDPV

Microscurgical Needle Holder

Microscurgical Needle Holders are used to grasp and guide the needle when suturing.

15



TPDAPV

Microscurgical Anatomical Tissue Pliers, Straight, Steel

Microscurgical Tissue Pliers used to grasp and stabilize soft tissue, 18mm.

16



S18SC

Iris Super Cut Curved Scissors

Iris Curved Super-Cut scissors with 1 serrated blade used for trimming tissue or cutting sutures.

17



ALLENCARD

Allen Membrane Measurement Card

The Allen Membrane Measurement Card is used as a study, sterilizable surface to measure and trim membrane material.

Case 2:

Treatment of challenging mandibular anterior recessions with attachment loss, rotated teeth and deficient papillae, with the Tunneled Coronally Advanced Flap (TCAF).

See more details about this case at HuFriedyGroup.com/TCAF





IMN41637CF

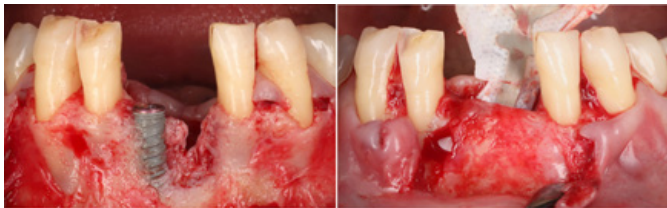
16 Instrument IMS™ Infinity Series™ Cassette, Black and Orange

IMS™ Cassettes are made of long-lasting, low-maintenance stainless steel. Soft, colored silicone rails securely hold instruments throughout the processing cycle. Available in over 100 different sizes, configurations and color options, and can be specialized to meet your needs.

Case 3:

One of the key factors of any successful regenerative procedure is intricate management and manipulation of the soft tissues, which protect the augmented site during the vital healing phase. This shows a case of a vertical bone augmentation around a previously diseased dental implant which relies heavily on the use of minimally invasive techniques, less invasive instruments and Tunneled Coronally Advanced Flap (TCAF) with a connective tissue graft.

See more details about this case at [HuFriedyGroup.com/TCAF](https://www.hufriedy.com/TCAF)



Case 4:

A challenging severe gingival recession treated with a laterally moved coronally advanced flap in combination with a connective tissue graft. As with soft tissue grafting procedure, the key delicate management of the flap is key in performing a successful surgical therapy.

See more details about this case at [HuFriedyGroup.com/TCAF](https://www.hufriedy.com/TCAF)



For more information visit [HuFriedyGroup.com/TCAF](https://www.hufriedy.com/TCAF)

