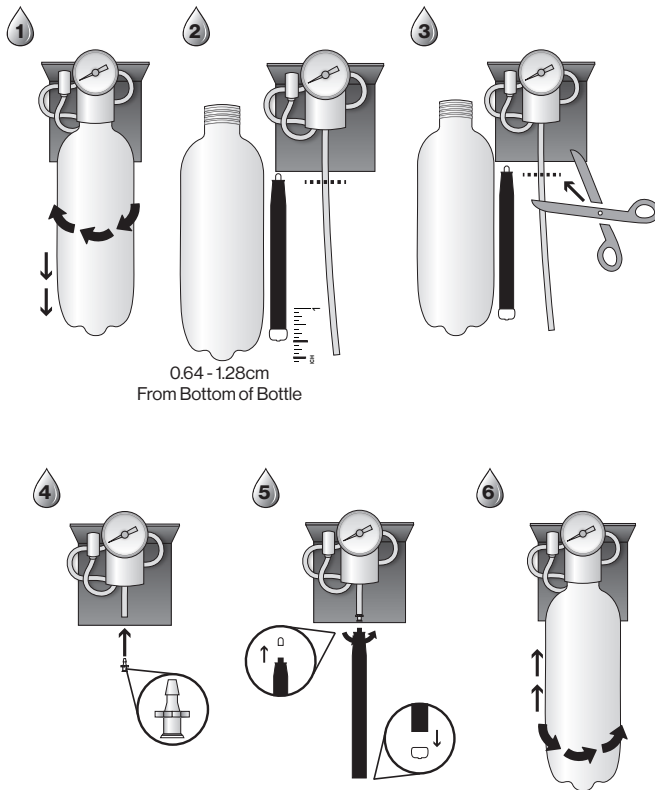


INSTALLATION INSTRUCTIONS DentaPure™ Cartridge DPI365B

TOOLS AND MATERIALS REQUIRED:

(1) DentaPure™ Cartridge (2) Luer fitting from Installation Kit (3) Scissors or sharp knife

Installation steps for DPI365B.



Once Installed:

- Check air pressure to bottle, set between 40-50 psi.
- Operate dental unit instruments until all air is purged from the water system.

INSTALLATION INSTRUCTIONS

DentaPure™ Cartridge DPI365M

TOOLS AND MATERIALS REQUIRED:

- Installation Kit—Includes attachment bracket(s), 2 polyflo fittings, 1 union
 - Scissors or sharp knife
 - Teflon plumber's tape
 - Adjustable wrench
1. Locate and turn off water supply. Identify placement of the cartridge in or near junction box, immediately after the water pressure regulator, making sure that there is enough space for the cartridge without kinking the tubing.
 2. Set water regulator pressure between 40–50 psi.
 3. Remove the blue shipping plugs from the ends of the cartridge. Wrap Teflon tape around the fitting threads and install the included 1/4" (0.635cm) or 5/8" (1.59 cm) polyflo fittings (determined by the size of your water line) on each end of the cartridge.
 4. Position the cartridge immediately after the water pressure regulator so that the maximum amount of waterline is treated. (Please note that the cartridge should not be treating the cuspidor/cup filler, this may require a bypass splice). Ensure the cartridge is placed in the direction of water flow as indicated by arrows on the cartridge body. Cut the water tube using scissors or a knife.

Note: If the unit has a cuspidor and cup filler, bypass these using a "T" fitting on the supply line before the water bottle.

5. Unscrew the brass retainer portion of the polyflow fitting on the cartridge side closest to the junction. Slide the tubing through the retainer and slip the tubing onto the fitting on the cartridge. Tighten the retainer to the fitting.

Note: if tubing has fabric covering, make sure the fabric is captive within the plastic retainer. Make sure the tubing will not kink after it is fitted to the cartridge.

6. Hold cartridge vertically, place a towel on the end of the cartridge. Turn on water, and let it flow to purge all air.
7. Repeat step 5 on the opposite side of the cartridge.
8. Install the holding bracket(s) if desired. Place cartridge in bracket(s).
9. Operate dental instrument(s) to check water flow and purge air and carbon filter residues from the lines. To install the bypass splice (to be used where iodinated water is not desired; ie: cuspidor cup configuration): turn water supply off and depressurize the water system by operating the syringe. Install a "T" fitting before the cartridge.

If treatment of the line is desired, turn off the water source. Remove the cartridge by unscrewing the nut retainers. Reinstall on the splice fitting. Turn on water and purge the water system free of air using the syringe and hand piece. When treatment is completed, reinstall the cartridge.



Manufactured by:
Crosstex International, Inc.
6789 W. Henrietta Road, Rush, NY 14543 USA
800-483-7433

Made in USA
3501005 / REV A - 09/2024

All company and product names are trademarks of Hu-Friedy Mfg. Co., LLC, its affiliates or related companies, unless otherwise noted.
©2024 Hu-Friedy Mfg. Co., LLC. All rights reserved.

CROSSTEX