

ATRAUMAIR FORCEPS USAGE GUIDE

How the best perform



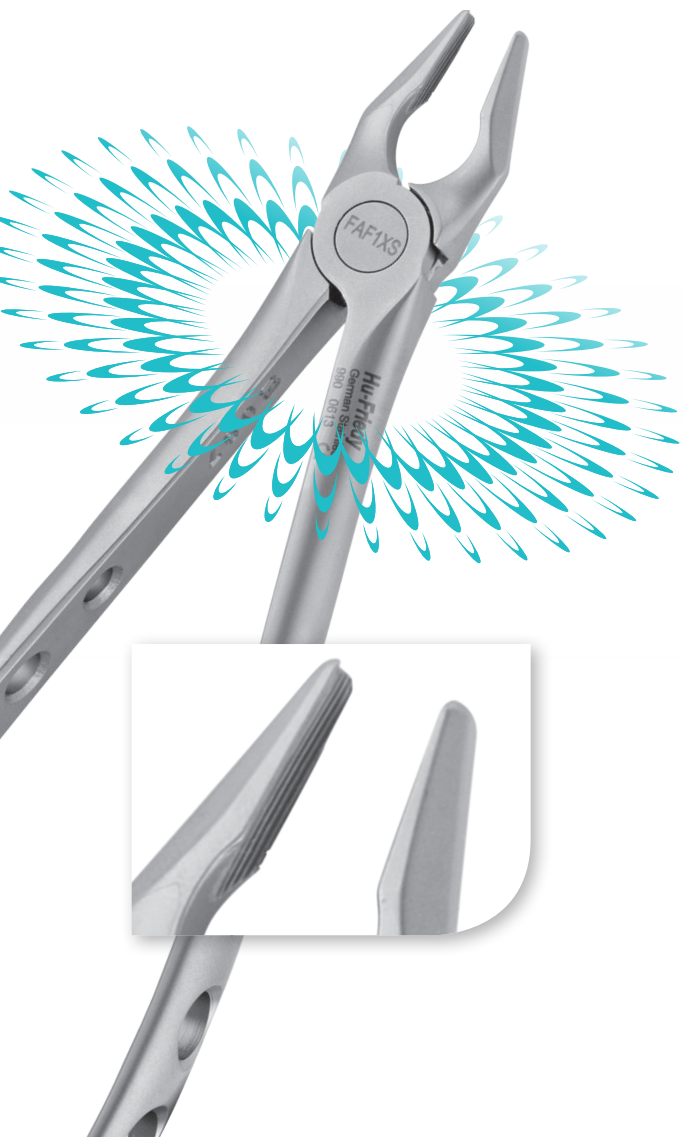
ATRAUMAIR FORCEPS COLLECTION

Hu-Friedy's new line of Atraumair Forceps are designed for optimal access and enhanced crown and root engagement.

Each forceps is meticulously crafted to the highest quality standard, ensuring superior performance and longevity. Atraumair Forceps are available in 13 unique patterns that provide a complete line for a variety of extraction cases.

ATRAUMAIR POINTS OF PERFORMANCE:

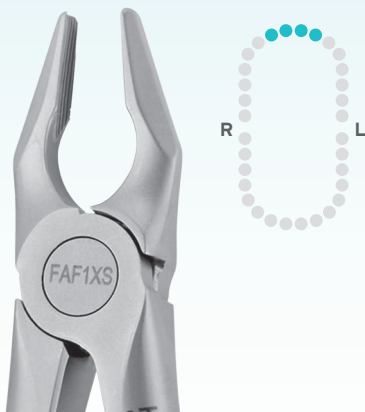
- Enhanced beak geometries and longitudinal beak serrations provide a **firm, secure grasp of the crown and root reducing the risk of crushing or fracturing the tooth**
- Laser marked hinge for **greater visibility when bagged for sterilization**
- Matte finish for **enhanced contrast and reduced light reflection**
- Unique hole design reduces weight of the forceps, providing **increased comfort and control**
- Meticulously crafted from the finest surgical grade stainless steel



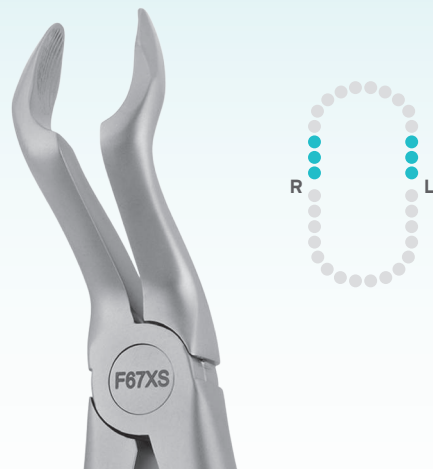
FORCEPS USAGE GUIDE



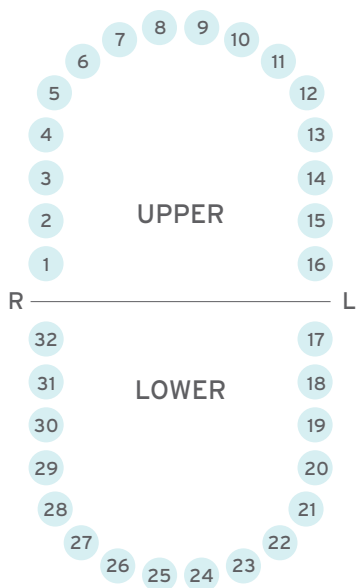
1 Standard Forceps
| **FIXS**
Upper Incisors



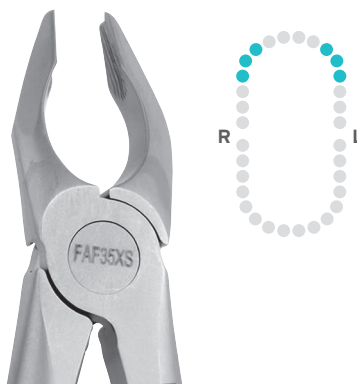
1 Apical Forceps
| **FAF1XS**
Upper Incisors



67 Forceps
| **F67XS**
Upper Molars



35 Forceps
| **F35XS**
Upper Canines and Premolars



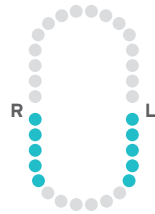
35 Apical Forceps
| **FAF35XS**
Upper Canines and Premolars



51 Root Forceps
| **FX51XS**
Upper Roots, Serrated



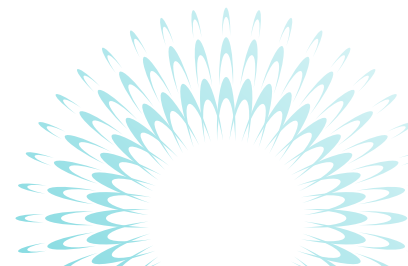
36 Forceps
| **F36XS**
Lower Incisors
and Canines



45 Root Forceps
| **FX45XS**
Lower Roots, Serrated



79 Forceps
| **FX79XS**
Lower Molars





36 Apical Forceps

| **FAF36XS**

Lower Premolars, Canines
and Incisors



13 Forceps

| **F13XS**

Lower Premolars



73 Forceps

| **FX73XS**

Lower Molars



23 Cowhorn Forceps

| **F23XS**

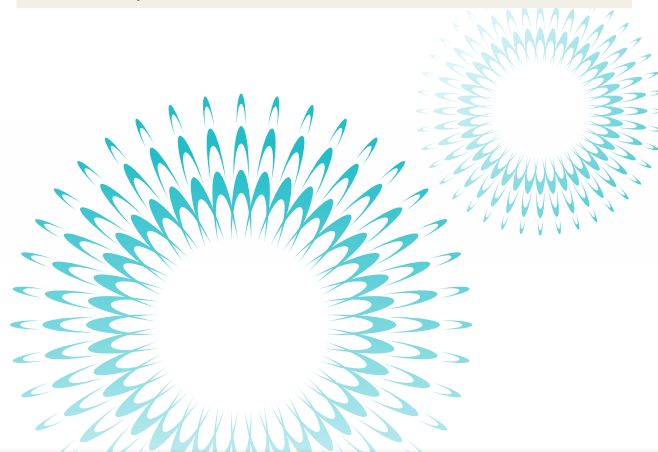
Lower Molars

SUGGESTED KIT LIST

ATRAUMATIC EXTRACTION KIT

#5 HD CS Mirror SS	MIR5HD
Cone Socket Mirror Handle	MH6
#5 European Style Round Scalpel Handle	10-130-05E
152 Kramer-Nevins Periosteal, Black Line	PKN152X
Urban Cheek Retractor	CRURBAN
1 Apical Forceps, Upper Incisors, Atraumair	FAF1XS
35 Apical Forceps, Upper Canines and Premolars, Atraumair	FAF35XS
36 Apical Forceps, Lower Premolars, Canines and Incisors, Atraumair	FAF36XS
Goldman-Fox Curved Super-Cut Scissors, Black Line	S16SCX

Adson-Brown Tissue Pliers, Perma Sharp®	TP5043
Castroviejo with Round Handle, Perma Sharp®	NH5024R
9 Molt Periosteal Elevator, Black Line	P9X
Periotome, Posterior, Black Line	PT1X
Periotome, Anterior, Black Line	PT2X
Luxating Elevator 3 mm, Curved, Black Line	EL3CX
Luxating Elevator 3 mm, Straight, Black Line	EL3SX
16-Instrument Signature Series® Cassette w/Accessory Area, Red	IM4160



For more information about
Hu-Friedy's Total Solutions visit

HU-FRIEDY.COM

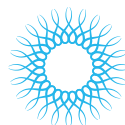
PERIODONTAL



RESTORATIVE



ORTHODONTIC



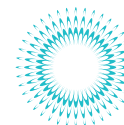
INSTRUMENT
MANAGEMENT



ENDODONTIC



SURGICAL



ULTRASONIC
SCALING



Hu-Friedy Mfg. Co., LLC: 3232 N. Rockwell St. | Chicago, IL 60618 | USA
Telephone: 1-800-Hu-Friedy (1-773-975-6100) | Website: Hu-Friedy.com

©2015 Hu-Friedy Mfg. Co., LLC. All rights reserved. HF-334/0215

Hu-Friedy